

Retail & Flex

Jefferson Junction

For Lease



Jefferson, MD

Just a short 5 min/7 mile drive west of Frederick. Great visibility from Rte. 340, a major commuter route to/from West Virginia, with easy on/off ramp access.



JEFFERSON JUNCTION	
HEAD TO TOES HAIR SALON	REAL CHANGE SYSTEMS, INC.
SAGE SMALL BUSINESS SERVICES	CORPORATE EXPOSURE
FCCQCC STEPPING STONE CTR.	FRED. CO. PERFORMING ARTS CO.
CLINGAN ELECTRONICS	CUSTOM HOT ROD FABRICATION, LLC
HOUTKROOPERS DRY CLEANERS	
CURVES	

Dave Chapin 240-436-6200 ★ Doug Chapin 301-788-4039

www.realestateinfrederick.com ★ www.chapincommercial.com

329A E. 2nd St. • Frederick, MD 21701

Main Office 240-436-6200



Local Knowledge. Quality Service.

ALL INFORMATION DEEMED RELIABLE BUT NOT GUARANTEED

Jefferson Junction

*3882 Roundtree Rd, #2
Jefferson, MD*

Retail/Office for Lease



\$14.00/SF
GROSS

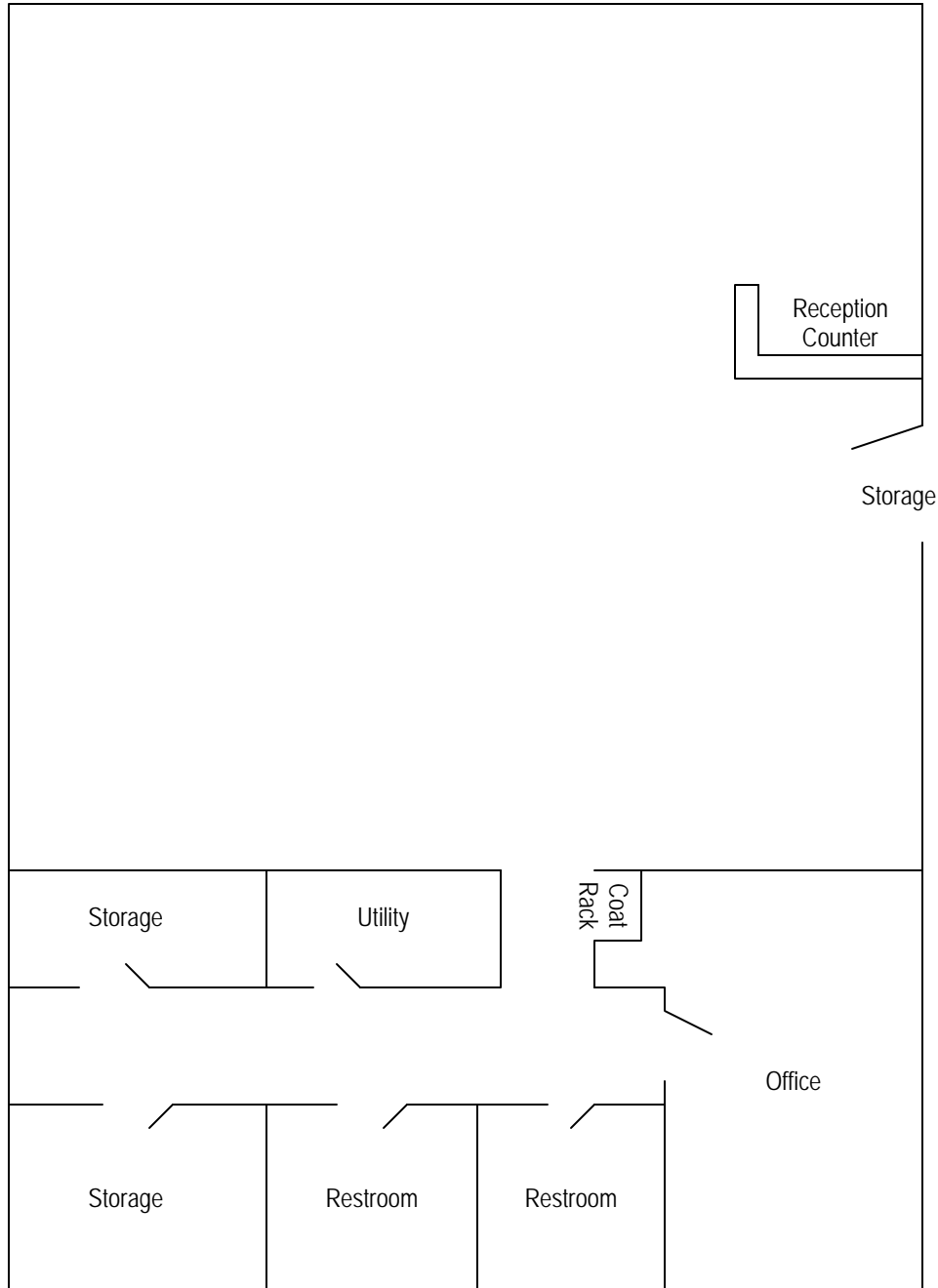
1,800 SF

- ★ Reception Counter
- ★ Large Open Area
- ★ 1 Office
- ★ 2 Storage Rooms
- ★ 2 Restrooms

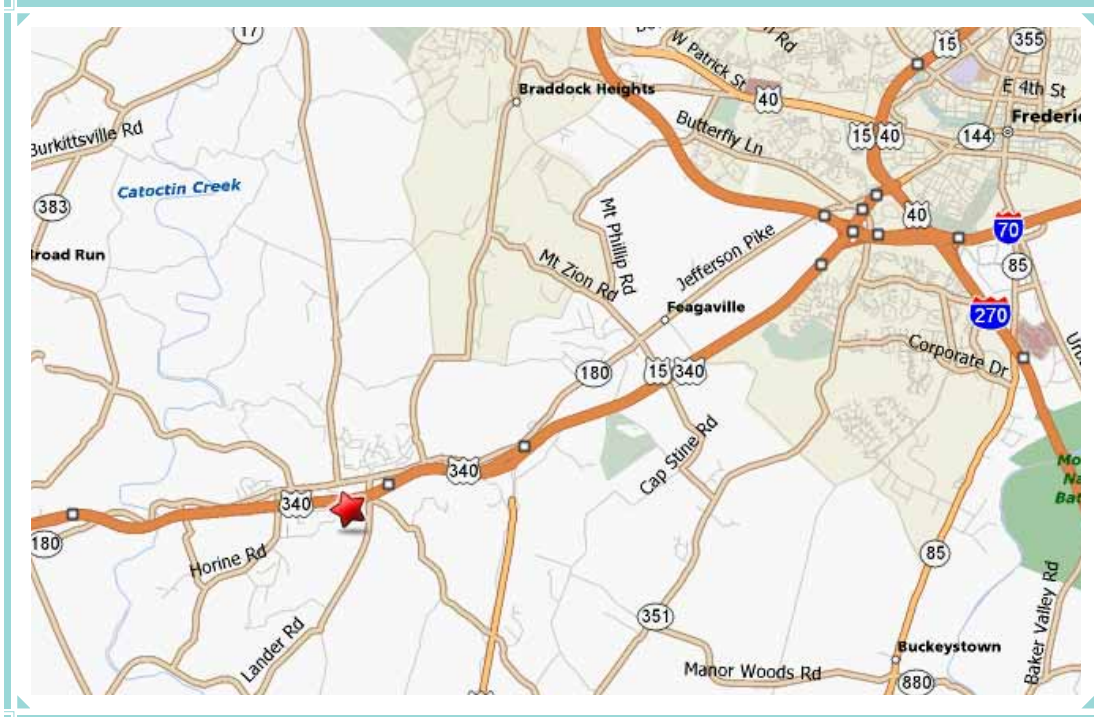
ALL INFORMATION DEEMED RELIABLE BUT NOT GUARANTEED

Jefferson Junction

3882 Roundtree Rd, #2 Jefferson, MD



Jefferson Junction Jefferson, MD Street & Aerial Maps



ALL INFORMATION DEEMED RELIABLE BUT NOT GUARANTEED